


WOLF-MINI U3300 R7KBI

Цепь	Комм.
1	
2	
3	
4	
5	
6	
7	
8	
9	
10	

BH-10

Цель	Комп.
	1
	2
	3
	4
	5
	6

Цель	Комп.
	1
	2
	3
	4
	5
	6

DCDC_SYNC
PWR_ON
PWR_HOLD
ON/OFF
+12
+5

POWER

№	Цепь	Комм.
1		
2		ON/OFF
3		USB_D+
4		USB_D-
5		CTRL_RCLK
6		CTRL_CLK
7		KEY_IN_DASH
8		KEY_IN_DOT
9		
10		AUDIO_48K_CLOCK
11		FPGA_CLK
12		FPGA_SYNC
13		FPGA_BUS_D3
14		FPGA_BUS_D5
15		WM8731_WS_LRC
16		WM8731_BCLK
17		WM8731_SDA
18		PTT_SW2
19		PTT_SW1
20		PTT_IN

254 BOT

Цепь	Комм
	1
	2
	3
	4
	5
	6
	7
	8
	9
	10
	11
	12
	13
	14
	15
	16
	17
	18
	19
	20

WM8731_ADC_SD

WM8731_DAC_SD

AUDIO_I2S_CLOCK

WM8731_SCK

FPGA_BUS_D7

FPGA_BUS_D6

FPGA_BUS_D4

FPGA_BUS_D2

FPGA_BUS_D1

FPGA_BUS_D0

PWR_ON

ESP_I_TX

ESP_I_RX


CTRL_OE

CTRL_DATA

PWR_HOLD

SWR_DET_BACKW

SWR_DET_FORW



+12

X5

Цепь	Комп.
	1
	2
	3

SD CS

PERI MISO

"SPI BOP"

Цепь	Комп.
	1
	2
	3

PERI_MOSI

PERI_SCK

"SPI TOP"

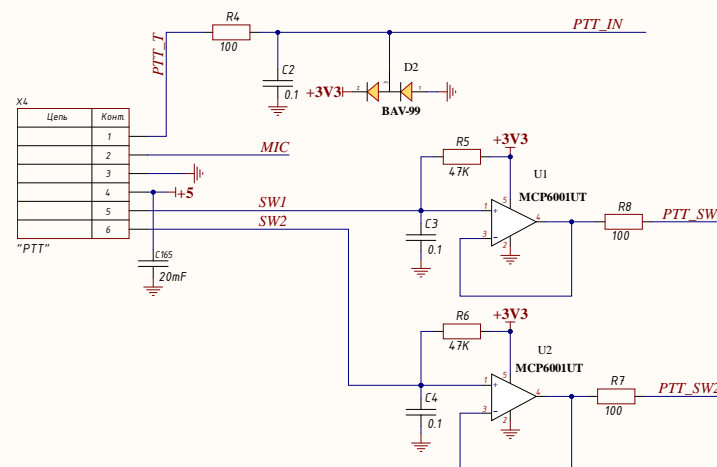
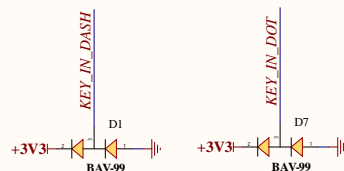
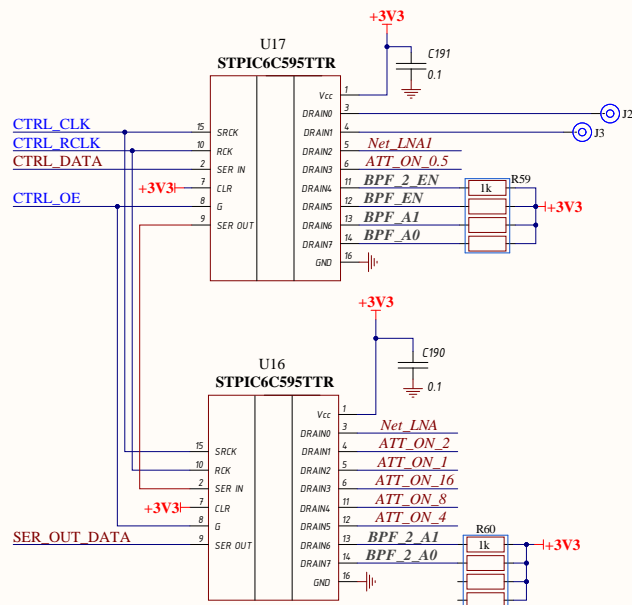
Цель	Комп.
	1
	2

ESP_1_TX

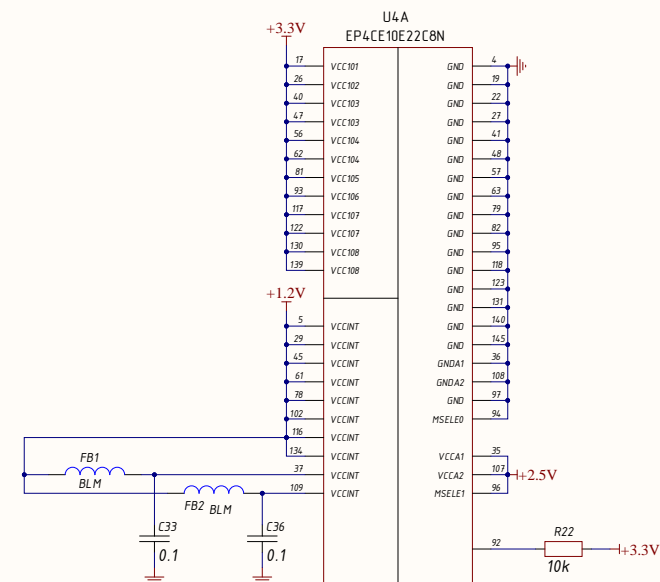
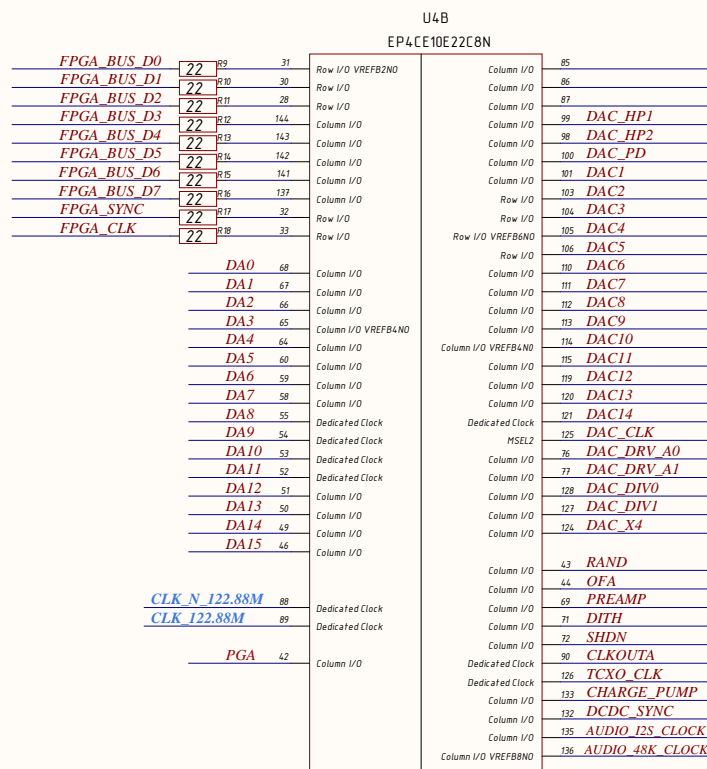
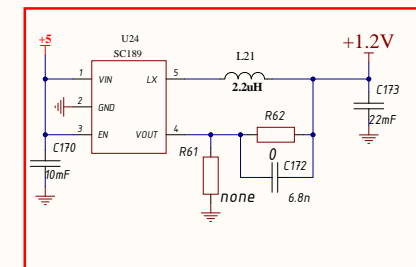
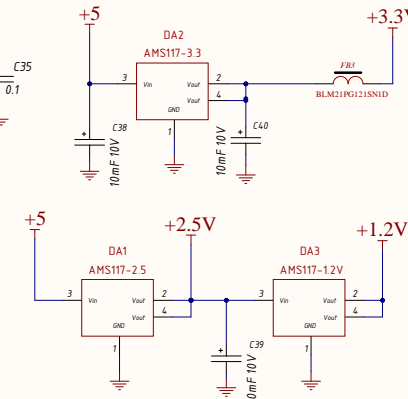
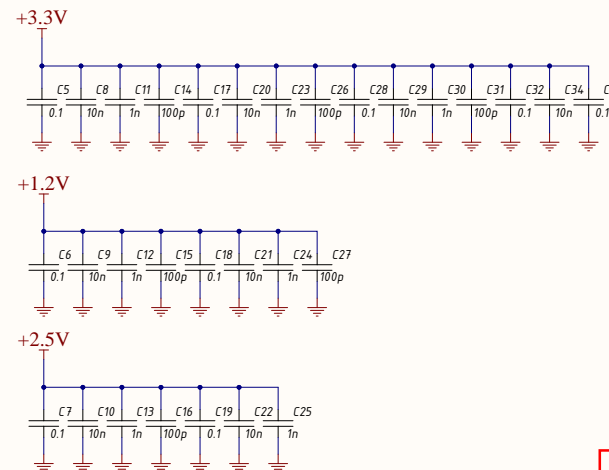
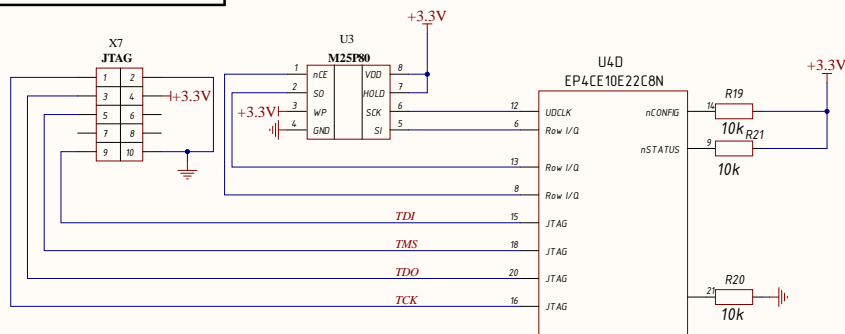
ESP_1_RX

"RX/TX WL-FI"

Цепь	Комп.
1	KEY_IN_DOT
2	KEY_IN_DASH
3	+3V3
4	R63
5	AUDIO_OUTA
6	AUDIO_OUTB

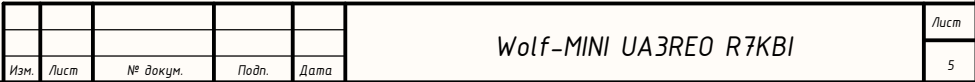


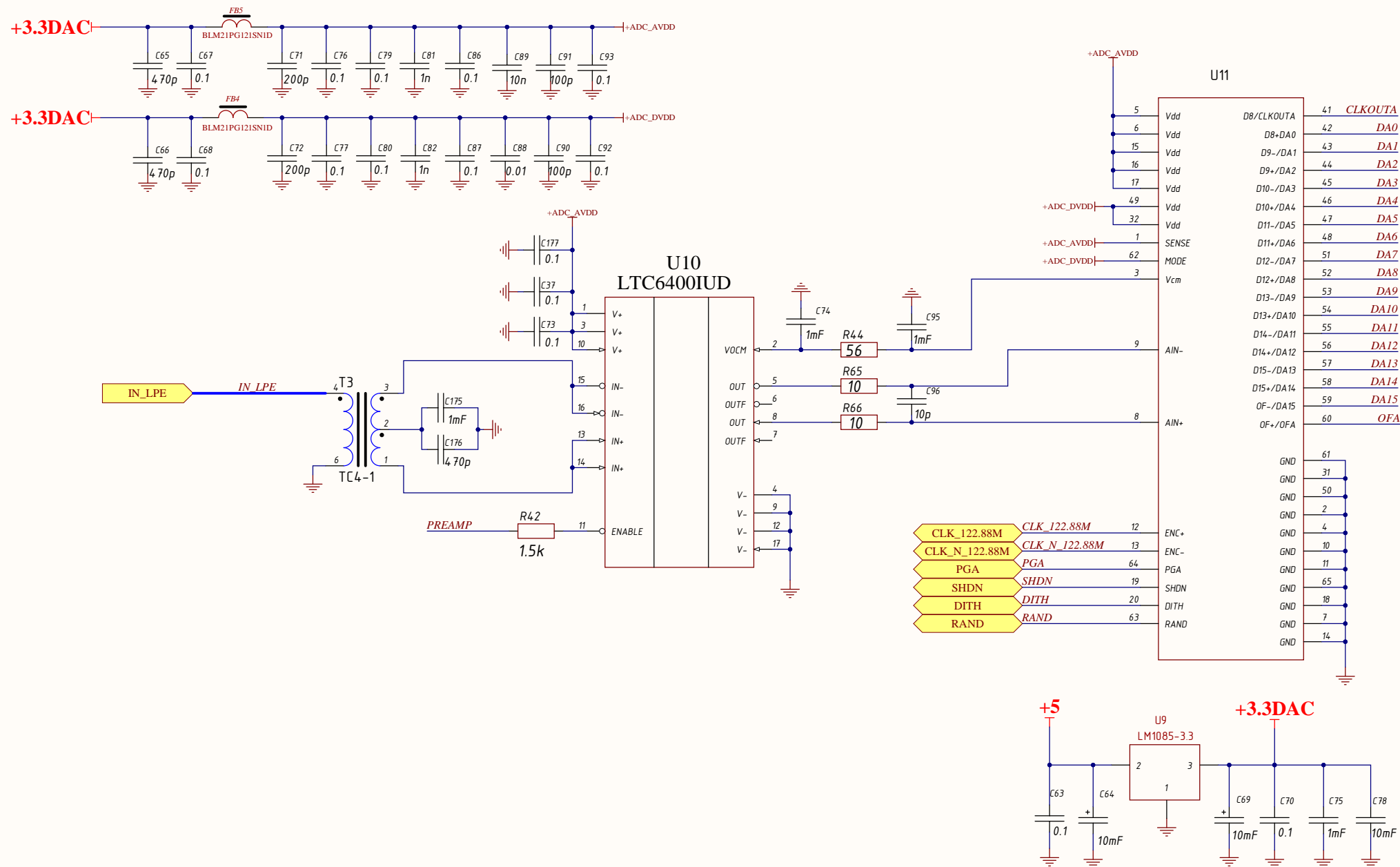
UA3RE0/R7KBI



Изм.	Лист	№ докум.	Подп.	Дат

Wolf-MINI UA3RE0 R7KBI





Подп. и дата

Инв. № дубл.

Взам. инв. №

Подп. и дата

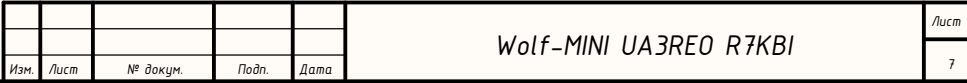
Инв. № подл.

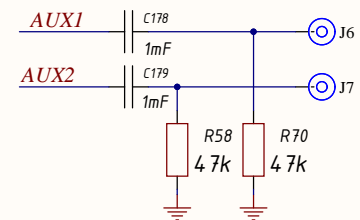
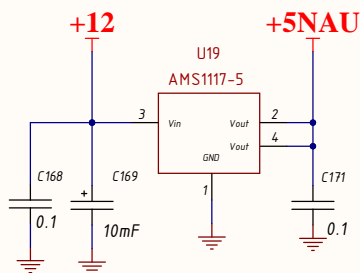
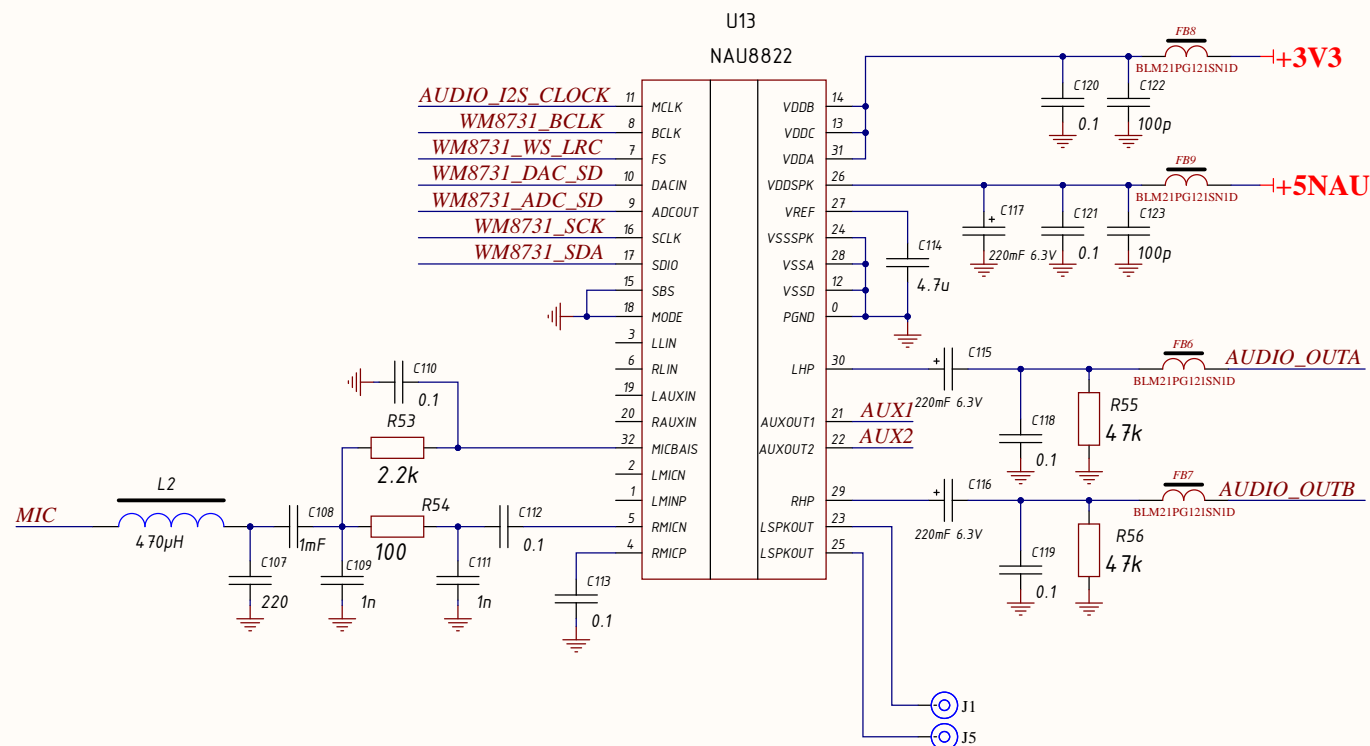
Изм.	Лист	№ докум.	Подп.	Дата

Wolf-MINI UA3REO R7KBI

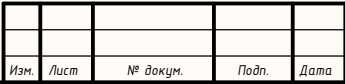
Лист

6





Инв. № подл.	Подп. и дата	Взам. инв. №	Инв. № дубл.	Подп. и дата



Comment	Description	Designator	Footprint	Value	Quantity
01	[NetValue], C14443, C100042	C1, C2, C3, C4, C5, C6, C7, C11, C14, C16, C36, C37, C38, C39, C40, C41, C42, C43, C44, C45, C46, C47, C48, C52, C56, C58, C63, C67, C68, C70, C72, C74, C77, C79, C80, C86, C87, C90, C93, C100, C103, C106, C110, C112, C113, C118, C119, C120, C121, C124, C125, C126, C127, C128, C129, C146, C171, C177, C181, C192, C197	CH6403C	Capacitor	50
10n	[NetValue], C100042	C8, C9, C10, C81, C22, C29, C34, C53, C101, C102, C103, C105, C105, C106	CH6403C	Capacitor	10
1n	[NetValue], C100040	C11, C12, C13, C23, C24, C26, C38, C81, C90, C100, C111, C160	CH6403C	Capacitor	12
100p	[NetValue], C14445	C14, C15, C16, C26, C27, C31, C61, C86, C91, C122, C123, C123, C124, C126	CH6403C	Capacitor	14
100nF 10V		C35, C39, C40, C95, C104	TANTAL_A	TantalCap	3
100nF		C53, C54, C55, C180	TANTAL_A	TantalCap	3
470p		C49, C55, C65, C66, C101, C126	CH6403C	Capacitor	4
7.5p		C25	CH6403C	Capacitor	3
10nF		C51, C56, C64, C114, C16, C108, C175, C176, C178, C179	CH6403C	Capacitor	9
000p		C69, C81	CH6403C	Capacitor	2
200p		C54, C67	TANTAL_B	TantalCap	2
200p		C71, C72	CH6403C	Capacitor	2
100nF		C16, C97, C98	CH1200C	Capacitor	3
100nF		C8	CH1200C	Capacitor	3
0.1uF		C38	CH6403C	Capacitor	3
0.001uF		C14	CH1200C	Capacitor	3
0.01uF		C10	CH6403C	Capacitor	3
0.01uF		C105	CH6403C	Capacitor	3
0.01uF		C107	CH6403C	Capacitor	3
0.01uF		C11	CH6403C	Capacitor	3
0.01uF		C114	CH6403C	Capacitor	3
0.01uF 6.3V		C115, C116, C117	TANTAL_B	TantalCap	3
15p		C10, C140, C154, C164	CH6403C	Capacitor	4
10n		C10, C102	CH6403C	Capacitor	2
100p		C112, C118, C144	CH6403C	Capacitor	3
0.1u		C108, C126	CH6403C	Capacitor	2
0.1u		C133, C137	CH6403C	Capacitor	2
100p		C134, C136	CH6403C	Capacitor	2
0.1u		C135, C139	CH6403C	Capacitor	2
0.1u		C136, C148	CH6403C	Capacitor	2
0.1u		C137, C140	CH6403C	Capacitor	2
0.1u		C139, C151	CH6403C	Capacitor	2
0.1u		C142, C152	CH6403C	Capacitor	2
0.1u		C141, C153	CH6403C	Capacitor	2
0.1u		C143	CH6403C	Capacitor	2
0.1u		C145, C146	CH6403C	Capacitor	2
0.1u		C146	CH6403C	Capacitor	2
0.1u		C147	CH6403C	Capacitor	2
0.001uF		C101, C126	CH1200C	Capacitor	2
0.001uF		C105	CH1200C	Capacitor	2
0.001uF		C107	CH6403C	Capacitor	2
0.001uF		C112	CH6403C	Capacitor	2
0.001uF		C113	CH6403C	Capacitor	2
0.001uF		C114	CH6403C	Capacitor	2
0.001uF		C115	CH6403C	Capacitor	2
0.001uF		C116	CH6403C	Capacitor	2
0.001uF		C117	CH6403C	Capacitor	2
0.001uF		C118	CH6403C	Capacitor	2
0.001uF		C119	CH6403C	Capacitor	2
0.001uF		C120	CH6403C	Capacitor	2
0.001uF		C121	CH6403C	Capacitor	2
0.001uF		C122	CH6403C	Capacitor	2
0.001uF		C123	CH6403C	Capacitor	2
0.001uF		C124	CH6403C	Capacitor	2
0.001uF		C125	CH6403C	Capacitor	2
0.001uF		C126	CH6403C	Capacitor	2
0.001uF		C127	CH6403C	Capacitor	2
0.001uF		C128	CH6403C	Capacitor	2
0.001uF		C129	CH6403C	Capacitor	2
0.001uF		C130	CH6403C	Capacitor	2
0.001uF		C131	CH6403C	Capacitor	2
0.001uF		C132	CH6403C	Capacitor	2
0.001uF		C133	CH6403C	Capacitor	2
0.001uF		C134	CH6403C	Capacitor	2
0.001uF		C135	CH6403C	Capacitor	2
0.001uF		C136	CH6403C	Capacitor	2
0.001uF		C137	CH6403C	Capacitor	2
0.001uF		C138	CH6403C	Capacitor	2
0.001uF		C139	CH6403C	Capacitor	2
0.001uF		C140	CH6403C	Capacitor	2
0.001uF		C141	CH6403C	Capacitor	2
0.001uF		C142	CH6403C	Capacitor	2
0.001uF		C143	CH6403C	Capacitor	2
0.001uF		C144	CH6403C	Capacitor	2
0.001uF		C145	CH6403C	Capacitor	2
0.001uF		C146	CH6403C	Capacitor	2
0.001uF		C147	CH6403C	Capacitor	2
0.001uF		C148	CH6403C	Capacitor	2
0.001uF		C149	CH6403C	Capacitor	2
0.001uF		C150	CH6403C	Capacitor	2
0.001uF		C151	CH6403C	Capacitor	2
0.001uF		C152	CH6403C	Capacitor	2
0.001uF		C153	CH6403C	Capacitor	2
0.001uF		C154	CH6403C	Capacitor	2
0.001uF		C155	CH6403C	Capacitor	2
0.001uF		C156	CH6403C	Capacitor	2
0.001uF		C157	CH6403C	Capacitor	2
0.001uF		C158	CH6403C	Capacitor	2
0.001uF		C159	CH6403C	Capacitor	2
0.001uF		C160	CH6403C	Capacitor	2
0.001uF		C161	CH6403C	Capacitor	2
0.001uF		C162	CH6403C	Capacitor	2
0.001uF		C163	CH6403C	Capacitor	2
0.001uF		C164	CH6403C	Capacitor	2
0.001uF		C165	CH6403C	Capacitor	2
0.001uF		C166	CH6403C	Capacitor	2
0.001uF		C167	CH6403C	Capacitor	2
0.001uF		C168	CH6403C	Capacitor	2
0.001uF		C169	CH6403C	Capacitor	2
0.001uF		C170	CH6403C	Capacitor	2
0.001uF		C			